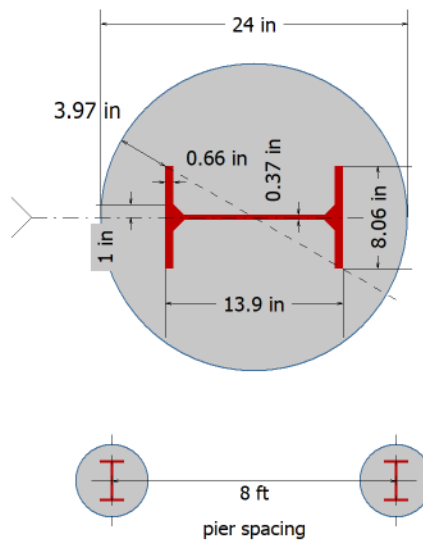
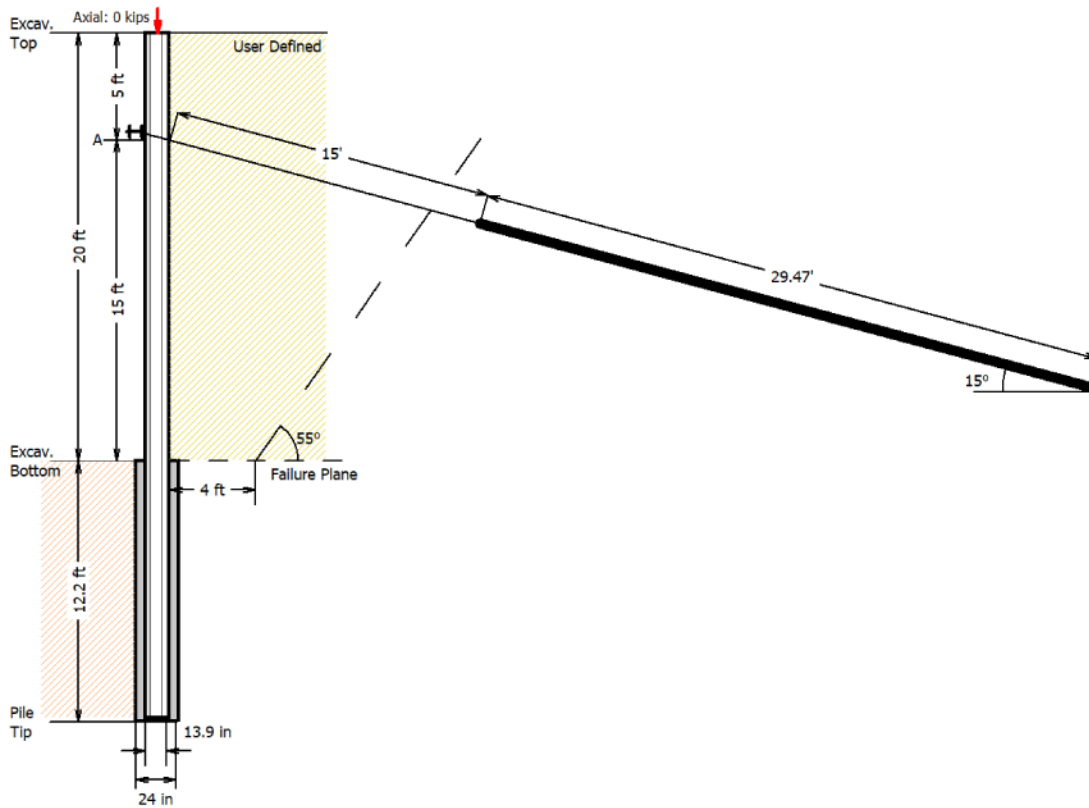


Anchored or Braced Shoring Analysis

Organization: **SOILSTRUCTURE SOFTWARE**
 Project Name: **TIEBACK 1 LEVEL COMPARISON**
 Design by: **L. AFFI, P.E.**
 Job #: **1111**
 Date: **7/29/2021**



Inputs

General Data

Units	English
Analysis Method	Apparent Earth Press.
Installation Method	Drilled
Pile Type	Soldier Beam (King Pile)
Reinforcement	I-Beam
Shored Height, H	20.00 ft
Pile Spacing, S	8.00 ft
Pile Width or Pier Diameter, B	2.00 ft

Earth Pressure and Surcharges

Loading Height	22.00 ft
Pile Spacing	8.00 ft
Soil Unit Weight	115.0 pcf
Vert. Uniform Surcharge	0.00 psf
Water Depth, GWT	39.00 ft
Soil/Bedrock Type	User Defined

Unfactored Earth Pressure

	x, ft	w, ksf
	0.00	0.50
	5.50	0.50
	16.50	0.50
	22.00	0.50
Act. Earth Press. Coeff, Ka		0.32
Seismic Horiz. Accel, Kh		0.00 g

Structural data

I-Beam

Beam Type	North American
Beam Size	W14X53
Beam Diagonal Length (<24 in - 4 in, O.K.)	16.07 in
Pipe Filled with Concrete	No
Steel Modulus of Elasticity	29000 ksi
Yield Strength, Fy	50 ksi
Conc. Compress. Str, f'c	2.50 ksi

Loads Applied to the Pile

Axial Load	0.00 kips
Vertical Axial Component	19.07 kips
Total Vertical Load	19.07 kips
Drilled Pier Diameter	2.00 ft
Drilled Pier Embedment	12.20 ft
Allow. Skin Friction	0.60 ksf
Allow. End Bearing	3.00 ksf

Anchors or Braces

Shored Height, H	20.00 ft
Loading Height, L	22.00 ft
Number of Anchors	1
Anchor Spacing	8.00 ft

Level	Anchor Type	Ht. from Prev, ft	Angle, deg
A	Tieback	5.00	15.00
B		15.00	

Embedment Ratio	0.61 H
Required Embedment	12.20 ft
Unbraced Length, Lb	180.00 in
Modification Factor, Cb	1.00
Total Vertical Load, P	19.07 kips
Effect. Length Factor, K	0.80
Max Deflection	1.00 in
Test Load Factor	1.25

Corner Braces

Use Corner Brace	No
------------------	----

Waler Design - Level A

Left Side Tributary, a	6.00 ft
Length between Anchors, b	12.00 ft
Right Side Tributary, c	6.00 ft
Loc. from Excav. Top	5.00 ft
Loading on Waler, wl	221.01 kips
Beam Type	North American
Beam Size	W16X57
Steel Yield Strength, Fy	50.00 ksi
Modulus of Elasticity, E	29000 ksi
Moment of Inertia, Ix	758 in ⁴
Two Channel Section	No

Bond Length

Soil/Bedrock Type	User Defined
Allow. Load Transfer	2.50 kips/ft

Lagging Design

Plate Type	Timber Lagging
Arching Factor	0.6
Allowed Stress	
Bending, Fb	1200.00 psi
Shear Parallel to Grain, Fv	150.00 psi
Reference Modulus of EI, E	1.7 10 ⁶ psi
Lumber is Southern Pine	No
Lumber Grade	#2

Results

Anchored or Braced Results

Unfactored Earth Pressure		x, ft	w, kips/ft
		0.00	4.00
		5.50	4.00
		16.50	4.00
		22.00	4.00

Level	Depth, ft	Tension (T) or Compression (C), kips	Unbonded Tieback Length, ft	Test Load, kips
A	5.00	58.9 (T)	15.0 3 Strands Grade 270	73.7

Static Check

Sum of Reactions	-88.0 kips
Sum of Loads	88.0 kips
Lateral Torsional Buckling Check, Mn/Omega	174 kip-ft
Axially-Loaded Member Check, Pn/Omega	310 kips
Combined Forces Utilization	72 %

Design

Max. Shear	-36.9 k @ 5.00 ft	
Max. Moment	-120.6 k-ft @ 14.18 ft	
Max. Deflection	-0.38 in @ 13.84 ft	
	Required	Provided
Aw (Adequate for Shear)	1.85	5.14 in ²
Zx (Adequate for Bending)	48.33	87.10 in ³
Utilized Ix (Adequate for Deflection)		38 %
Slenderness Ratio, kL/r		75

Waler Design - Level A

Waler Length, l	24.00 ft	
Uniform Loading, w	9.21 kips/ft	
	R1	R2
Reactions	110.50	110.50 kips
	V1	V2
Shear	55.25	55.25
	M1	M2
Moment	-165.75	-165.75
	V3	V4
	55.25	55.25
	M3	Mmax
	0.00	165.75 kip-ft
	Required	Provided
Sec. Mod, Sx (Waler is Adequate)	66.30	92.20 in ³
Max. Deflection	0.274	0.600 in

Bond Length

Soil/Bedrock Type	User Defined
Level A Bond Length	29.47 ft

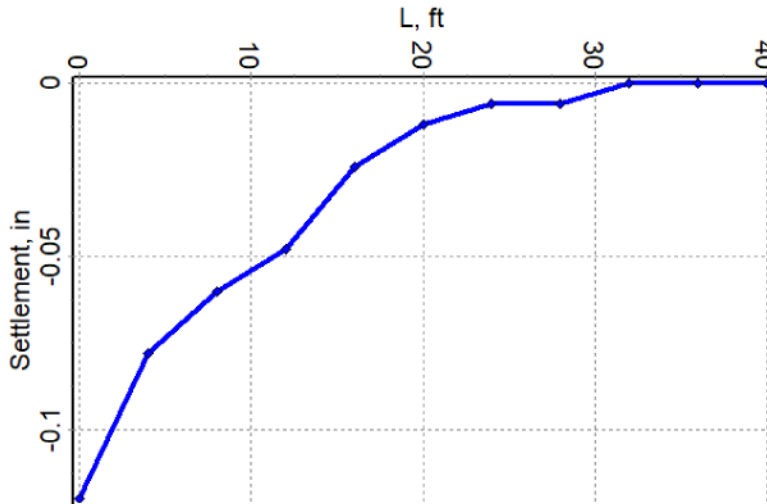
Loads Applied to the Pile

Allowable Axial Load	55.42 kips
----------------------	------------

Lagging Design

Soil Pressure	132 psf	
Max Bending Moment	596 lb-ft/ft	
Shear	397.4 plf	
	Adjusted	Actual
Bending Stress	1223.7	572.3 psi
Shear Parallel to Grain	145.5	19.9 psi
Deflection		0.16 in
Wood Lagging Size	3x12 timber	

Surface Settlement



Guardrail Design

Guardrail Design

Shape	L3X3X3/8
Length of the Guardrail	3.50 ft
Lateral Bracing	3.50 ft
Max. Spacing of Guardrail	8.00 ft
Dist. Load in Any Dir.	50 plf
Point Load in Any Dir.	200 lbf
ASD Safety Factor of Comp.	1.67
ASD Safety Factor of Bend.	1.67

Guardrail Design Results

	Allowable	Applied
Compression in the Post	24.95	0.40 k
Yield Mom. Axis of Bending		3.713 k-ft
Elastic lat-tors. Buckling Mom.		4.060 k-ft
Bending moment in the post	2.223	1.400 k-ft
Welding Stress, y-axis	31.49	10.81 ksi
Welding Stress, x-axis	30.09	19.19 ksi

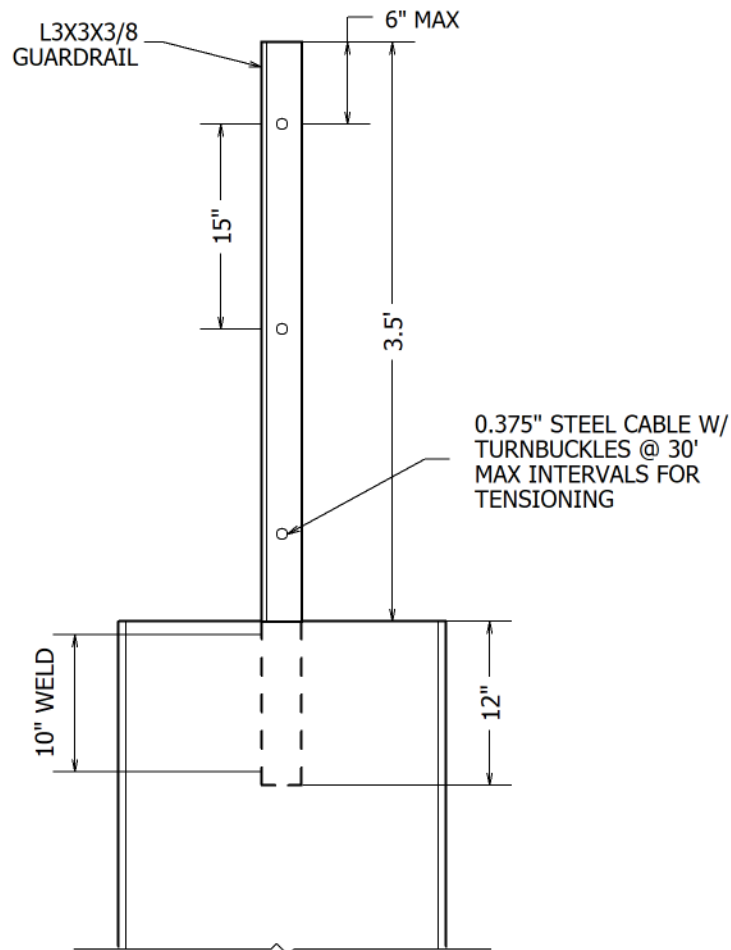
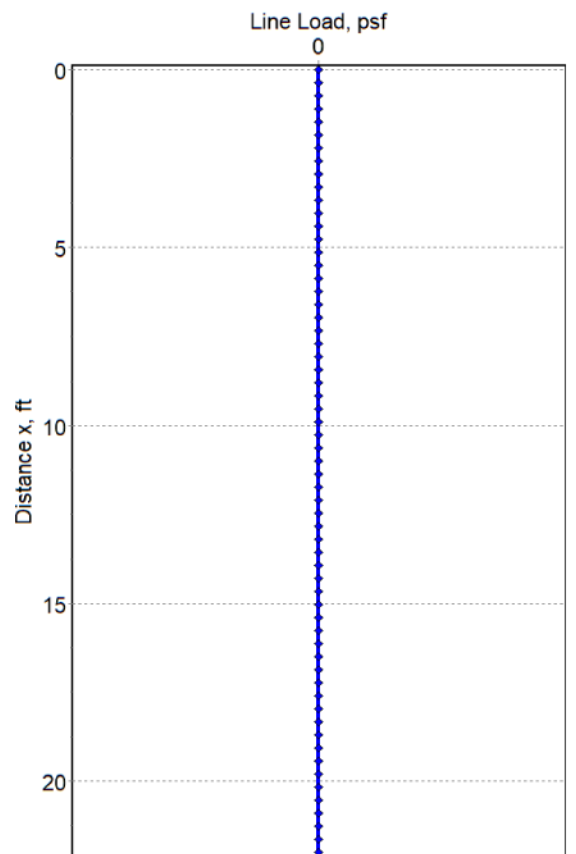
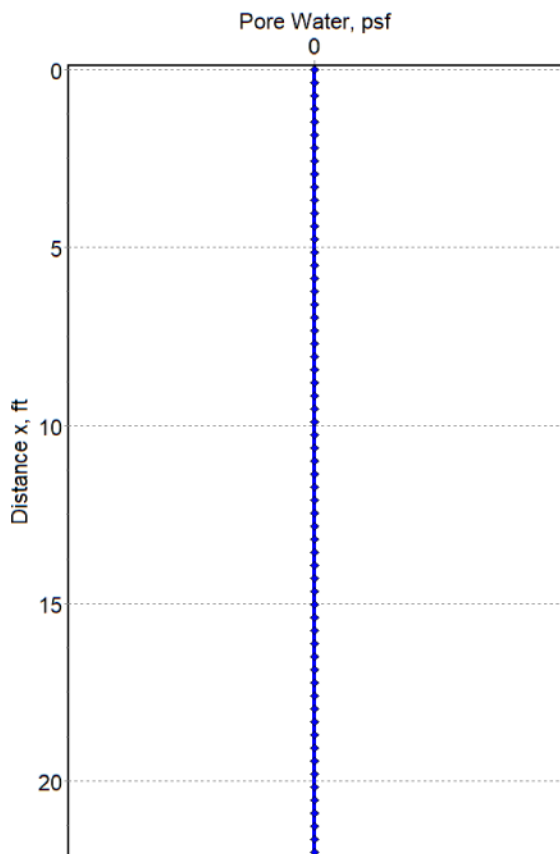
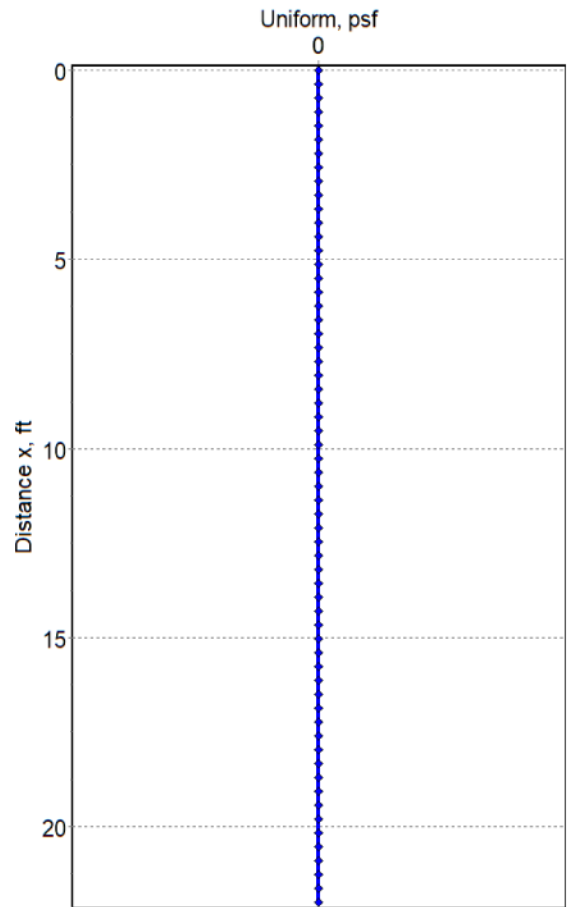
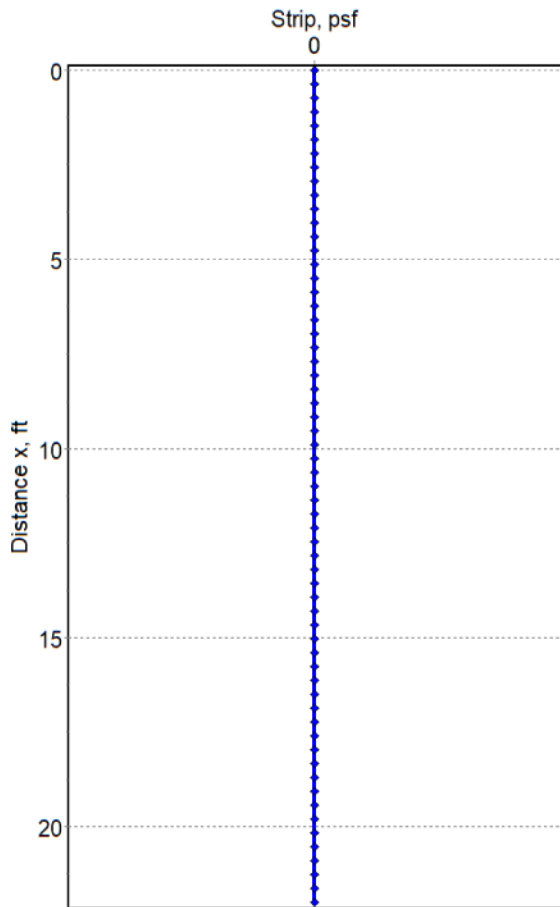


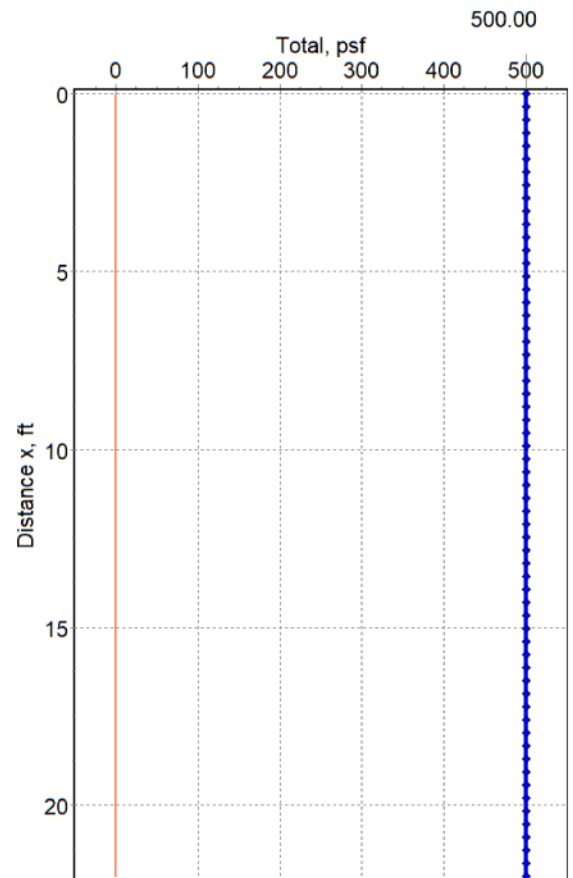
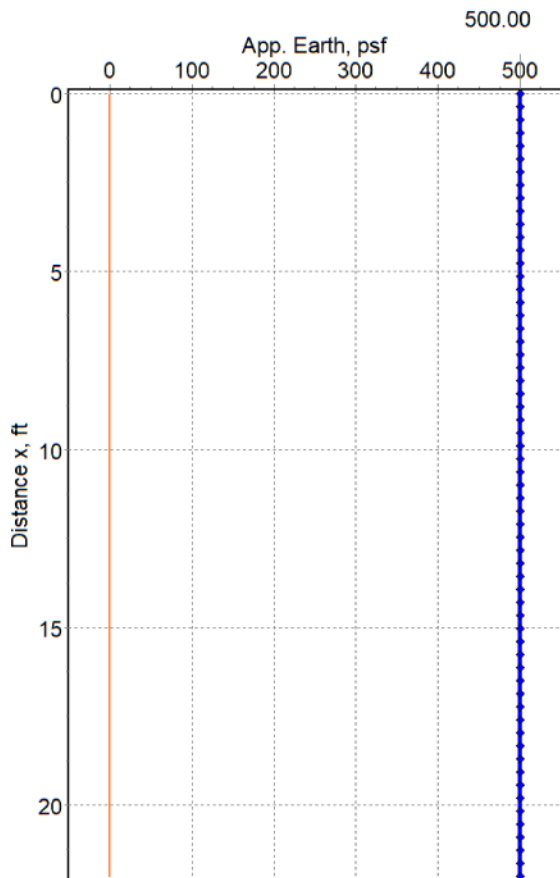
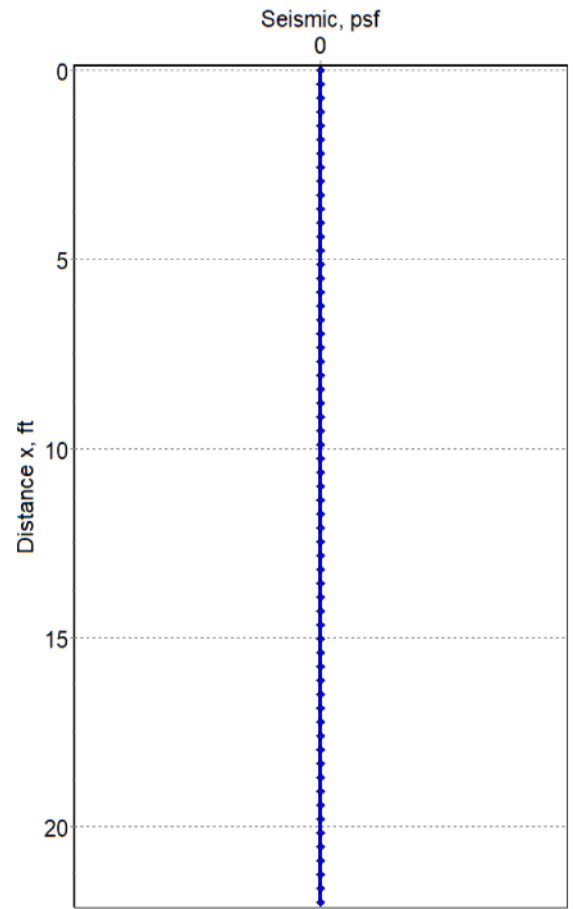
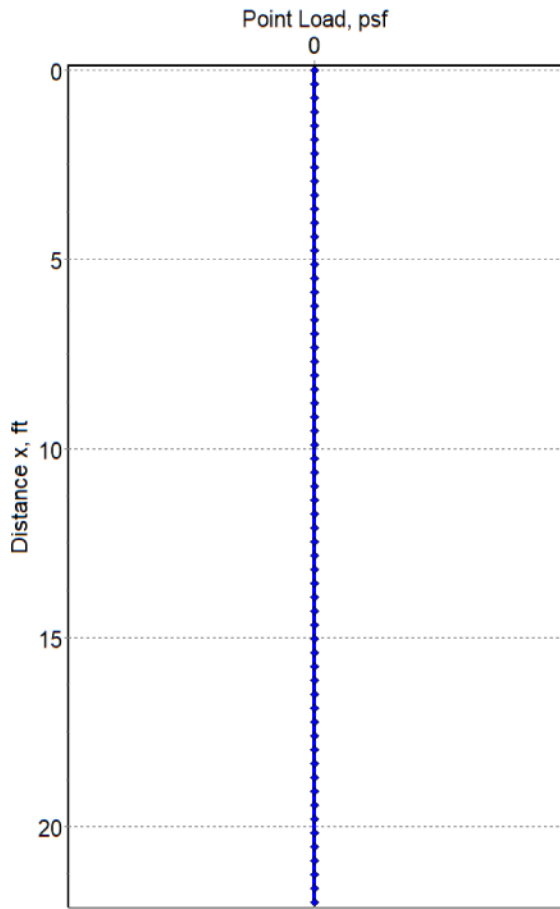
Table of Test Results

#	Depth, ft	Strip Load, psf	Unif. Surch, psf	Pore Water, psf	App. Earth, psf	Line Load, psf	Point Load, psf	Seism. Load, psf	Total per ft, psf/ft	Total per Pile, k/ft
0	0.00	0.00	0.00	0.00	500.00	0.00	0.00	0.00	500.00	4.00
1	0.37	0.00	0.00	0.00	500.00	0.00	0.00	0.00	500.00	4.00
2	0.73	0.00	0.00	0.00	500.00	0.00	0.00	0.00	500.00	4.00
3	1.10	0.00	0.00	0.00	500.00	0.00	0.00	0.00	500.00	4.00
4	1.47	0.00	0.00	0.00	500.00	0.00	0.00	0.00	500.00	4.00
5	1.83	0.00	0.00	0.00	500.00	0.00	0.00	0.00	500.00	4.00
6	2.20	0.00	0.00	0.00	500.00	0.00	0.00	0.00	500.00	4.00
7	2.57	0.00	0.00	0.00	500.00	0.00	0.00	0.00	500.00	4.00
8	2.93	0.00	0.00	0.00	500.00	0.00	0.00	0.00	500.00	4.00
9	3.30	0.00	0.00	0.00	500.00	0.00	0.00	0.00	500.00	4.00
10	3.67	0.00	0.00	0.00	500.00	0.00	0.00	0.00	500.00	4.00
11	4.03	0.00	0.00	0.00	500.00	0.00	0.00	0.00	500.00	4.00
12	4.40	0.00	0.00	0.00	500.00	0.00	0.00	0.00	500.00	4.00
13	4.77	0.00	0.00	0.00	500.00	0.00	0.00	0.00	500.00	4.00
14	5.13	0.00	0.00	0.00	500.00	0.00	0.00	0.00	500.00	4.00
15	5.50	0.00	0.00	0.00	500.00	0.00	0.00	0.00	500.00	4.00
16	5.87	0.00	0.00	0.00	500.00	0.00	0.00	0.00	500.00	4.00
17	6.23	0.00	0.00	0.00	500.00	0.00	0.00	0.00	500.00	4.00
18	6.60	0.00	0.00	0.00	500.00	0.00	0.00	0.00	500.00	4.00
19	6.97	0.00	0.00	0.00	500.00	0.00	0.00	0.00	500.00	4.00
20	7.33	0.00	0.00	0.00	500.00	0.00	0.00	0.00	500.00	4.00
21	7.70	0.00	0.00	0.00	500.00	0.00	0.00	0.00	500.00	4.00
22	8.07	0.00	0.00	0.00	500.00	0.00	0.00	0.00	500.00	4.00
23	8.43	0.00	0.00	0.00	500.00	0.00	0.00	0.00	500.00	4.00
24	8.80	0.00	0.00	0.00	500.00	0.00	0.00	0.00	500.00	4.00
25	9.17	0.00	0.00	0.00	500.00	0.00	0.00	0.00	500.00	4.00
26	9.53	0.00	0.00	0.00	500.00	0.00	0.00	0.00	500.00	4.00
27	9.90	0.00	0.00	0.00	500.00	0.00	0.00	0.00	500.00	4.00
28	10.27	0.00	0.00	0.00	500.00	0.00	0.00	0.00	500.00	4.00
29	10.63	0.00	0.00	0.00	500.00	0.00	0.00	0.00	500.00	4.00
30	11.00	0.00	0.00	0.00	500.00	0.00	0.00	0.00	500.00	4.00
31	11.37	0.00	0.00	0.00	500.00	0.00	0.00	0.00	500.00	4.00
32	11.73	0.00	0.00	0.00	500.00	0.00	0.00	0.00	500.00	4.00
33	12.10	0.00	0.00	0.00	500.00	0.00	0.00	0.00	500.00	4.00
34	12.47	0.00	0.00	0.00	500.00	0.00	0.00	0.00	500.00	4.00
35	12.83	0.00	0.00	0.00	500.00	0.00	0.00	0.00	500.00	4.00
36	13.20	0.00	0.00	0.00	500.00	0.00	0.00	0.00	500.00	4.00
37	13.57	0.00	0.00	0.00	500.00	0.00	0.00	0.00	500.00	4.00
38	13.93	0.00	0.00	0.00	500.00	0.00	0.00	0.00	500.00	4.00
39	14.30	0.00	0.00	0.00	500.00	0.00	0.00	0.00	500.00	4.00
40	14.67	0.00	0.00	0.00	500.00	0.00	0.00	0.00	500.00	4.00
41	15.03	0.00	0.00	0.00	500.00	0.00	0.00	0.00	500.00	4.00
42	15.40	0.00	0.00	0.00	500.00	0.00	0.00	0.00	500.00	4.00
43	15.77	0.00	0.00	0.00	500.00	0.00	0.00	0.00	500.00	4.00
44	16.13	0.00	0.00	0.00	500.00	0.00	0.00	0.00	500.00	4.00
45	16.50	0.00	0.00	0.00	500.00	0.00	0.00	0.00	500.00	4.00
46	16.87	0.00	0.00	0.00	500.00	0.00	0.00	0.00	500.00	4.00
47	17.23	0.00	0.00	0.00	500.00	0.00	0.00	0.00	500.00	4.00
48	17.60	0.00	0.00	0.00	500.00	0.00	0.00	0.00	500.00	4.00
49	17.97	0.00	0.00	0.00	500.00	0.00	0.00	0.00	500.00	4.00
50	18.33	0.00	0.00	0.00	500.00	0.00	0.00	0.00	500.00	4.00
51	18.70	0.00	0.00	0.00	500.00	0.00	0.00	0.00	500.00	4.00
52	19.07	0.00	0.00	0.00	500.00	0.00	0.00	0.00	500.00	4.00
53	19.43	0.00	0.00	0.00	500.00	0.00	0.00	0.00	500.00	4.00
54	19.80	0.00	0.00	0.00	500.00	0.00	0.00	0.00	500.00	4.00
55	20.17	0.00	0.00	0.00	500.00	0.00	0.00	0.00	500.00	4.00
56	20.53	0.00	0.00	0.00	500.00	0.00	0.00	0.00	500.00	4.00
57	20.90	0.00	0.00	0.00	500.00	0.00	0.00	0.00	500.00	4.00
58	21.27	0.00	0.00	0.00	500.00	0.00	0.00	0.00	500.00	4.00
59	21.63	0.00	0.00	0.00	500.00	0.00	0.00	0.00	500.00	4.00
60	22.00	0.00	0.00	0.00	500.00	0.00	0.00	0.00	500.00	4.00

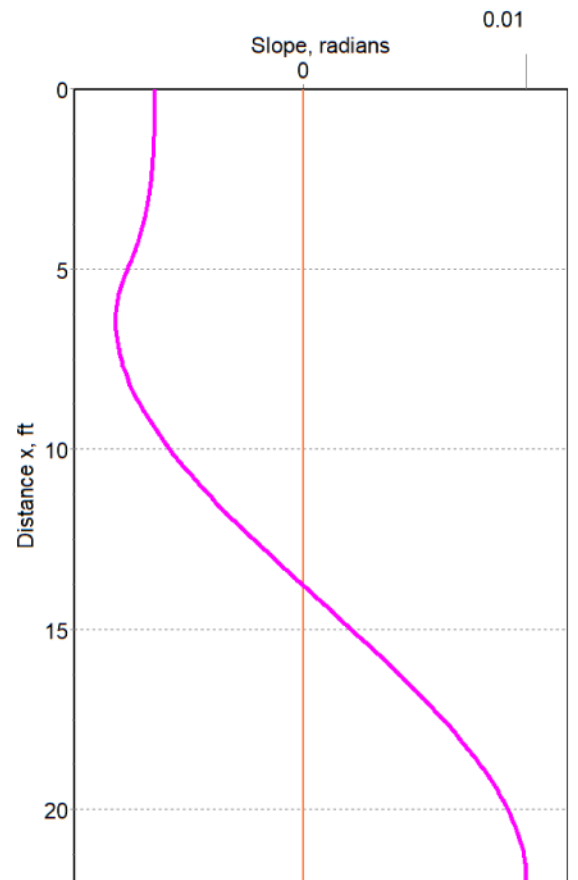
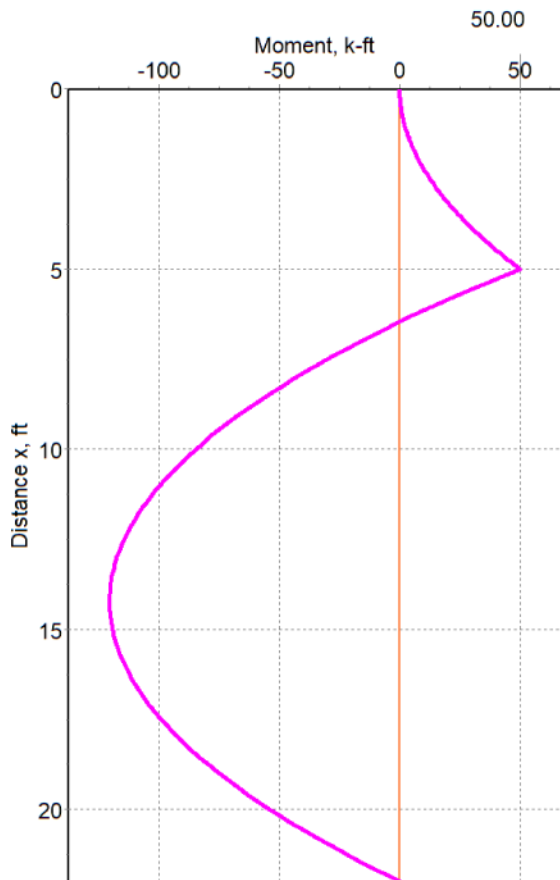
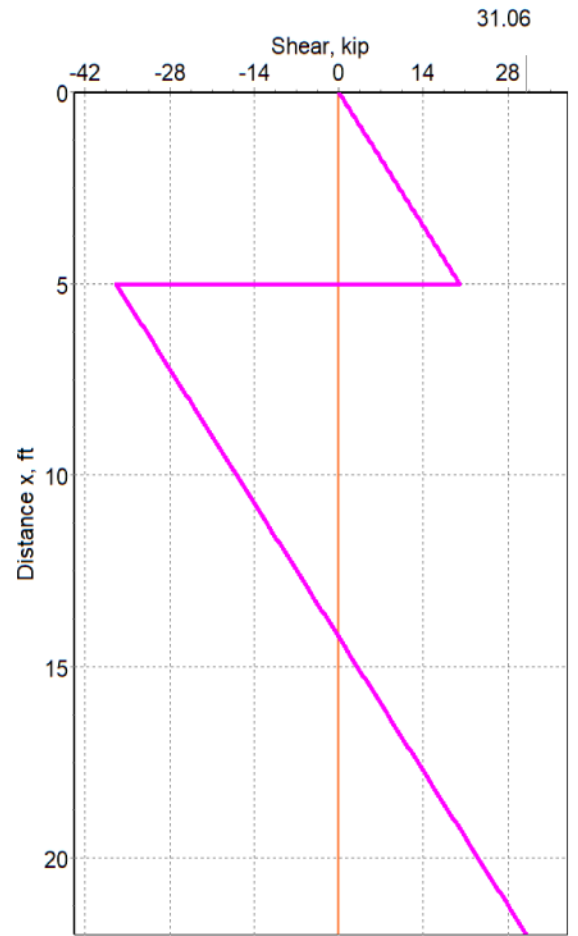
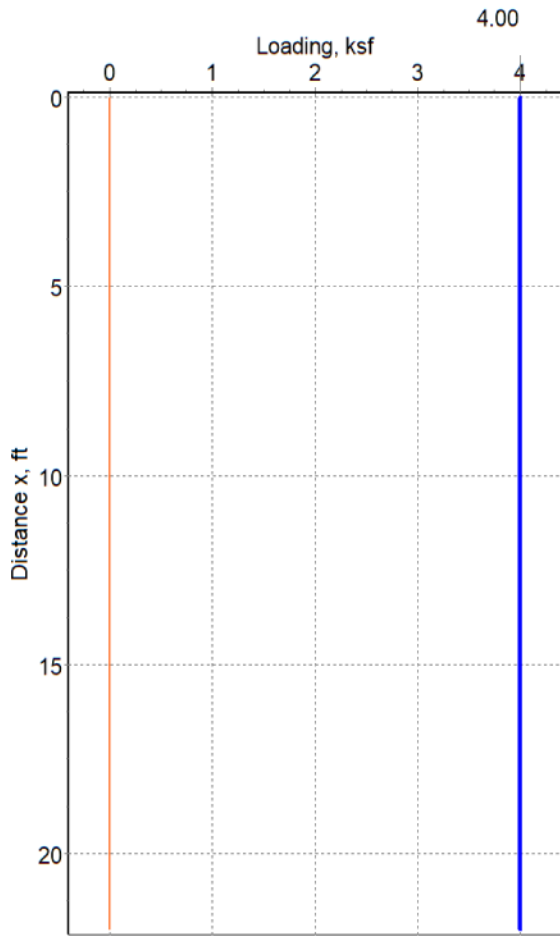
Charts

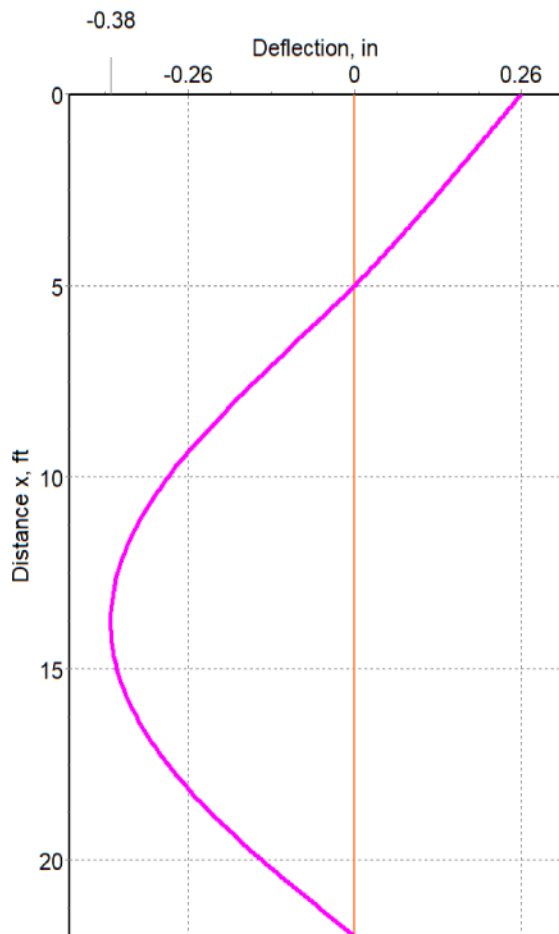


Charts



Charts





NOTES:

1. The Shoring Engineer shall check that the earth pressures entered in the software match the soils report & site soils parameters.
2. The Shoring Engineer shall check (a) Cantilever Shoring Height assuming a 2 ft over-excavation for top (A) anchor. You can use CANTILEVER SHORING Software by SoilStructure.com
3. The Shoring Engineer shall check all anchor stability before the final design. For example, a 3 level anchor should be checked for cantilever position of the first anchor (assuming 2 ft (0.6 m) over-excavation), the second anchor (also a 2 ft (0.6 m) over-excavation) and then the final third anchor installation.
4. It is advised that the Combined Forces Utilization be limited to 90% maximum due to the accuracy of the Apparent Earth Pressures assumed in this Software.
5. It is also advised that the vertical height between anchors or braces be limited to 16.4 ft (5 m) maximum. Also advised to limit height from lowest anchor to base of excavation to 16.4 ft (5 m) maximum.
6. We have tried our best to check the stability of excavations using generally accepted procedures. However, the final design of the shoring is the responsibility of the shoring engineer (licensed professional engineer).
7. The Apparent Earth Pressure Diagrams have been established on the basis of a rather limited number of cuts from about 26 ft to 62 ft (8 m to 19 m) in Height. Therefore, the user should use it with caution on much deeper cuts.
8. The Apparent Earth Pressure Diagrams do not bear any resemblance to the distribution of earth pressure against the shoring piles. It is merely an approximate method of calculating strut or tieback loads.
9. In no event will SOILSTRUCTURE SOFTWARE, INC., its employees, consultants or owners be liable to anyone for any unfavorable conditions occurring from the use of this Software. The Licensee acknowledges and accepts all of these statements when choosing to use this Software.

References:

1. Performance of Earth and Earth-Supported Structures (Vol. 1 + 2), ASCE, 1972
2. Foundation Design, W.C. Teng, 1962
3. Foundation Engineering, A.R. Jumikis, 2nd Ed., 1987
4. Foundation Analysis & Design, J. E. Bowles, 5th Ed., 1996
5. Lateral Stresses in the Ground and Design of Earth-Retaining Structures, ASCE 1970
6. Recommendations on Excavations, DGGT, 3rd Ed., 2014
7. AISC Steel Construction Manual, 15th Ed., 2017
8. Lateral Support Systems and Underpinning (Vol. 1, 2, 3), FHWA, 1975
9. Pile Buck Steel Sheet Piling Design Manual, Pile Buck, Inc, 1987
10. Practical Design of Sheet Pile Bulkheads, Arbed, 1991
11. Earth Support Systems & Retaining Structures, Pile Buck Inc., 1992
12. Recommendations for Prestressed Rock and Soil Anchors, PTI, 2014
13. Design and Performance of Earth Retaining Structures, ASCE, 1990
14. Earth Retention Conference 3, ASCE, 2010
15. Guidelines of Engineering Practice for Braced and Tied-Back Excavations, ASCE 1997
16. Review of Design Methods for Excavations, GCO 1-90 Hong Kong, 2003
17. Soil Mechanics in Engineering Practice, 3rd Ed., Terzaghi, Peck & Mesri, 1996
18. Earth Slopes & Retaining Structures, Custom 8th Ed., Das & Sobhan, 2018
19. Geotechnical Engineering: Foundation Design, Cernica, 1995
20. Fundamentals of Deep Excavations, Chang-Yu Ou, 1st Ed, 2021
21. Design, Construction and Performance of Deep Braced Excavation, S.J. Boone, 2004
22. SoilStructure Software: Anchored or Braced Shoring v1.0.0